

*3<sup>rd</sup> Annual*

# *Royal Classic*



Saturday January 4, 2020 at 5:00 pm  
Hansen Learning Center in Ames, IA  
Offering Elite Registered Simmental, Angus, & AOB Females

*Lifestyle, Livelihood, Legacy*

### Event Schedule:

Friday, January 3<sup>rd</sup>

- Cattle available for viewing

Saturday, January 4<sup>th</sup>

- Cattle available for viewing

- 4-7pm Meal by B Fabulous BBQ

- 5pm Auction Begins



### Location:

Hansen Student Learning Center

2516 Mortensen Road

Ames, Iowa 50011

### Videos & Updates:

[www.dwyercattle.com](http://www.dwyercattle.com)

### Online Bidding/Broadcast:

[www.liveauctions.tv](http://www.liveauctions.tv)

### Sale Staff:

Jered Shipman 806-392-9241

Tom Rooney 515-491-6025

Mike Sorenson 641-745-7949

Doug Parke 859-421-6100

Buddy Robertson 580-747-7000

Dalton Lundy 502-727-6898

Jared Rueter 815-238-7530

### Sale Management:

Dwyer Cattle

Bob 309-337-1404

Nick 309-337-6404

[www.dwyercattle.com](http://www.dwyercattle.com)

### Lodging:

Gateway Hotel & Conference  
Center

2100 Green Hills Drive

Ames Iowa 50014

PH: 515-292-8600

Block saved under Royal Classic

**LiveAuctions.TV**

Online Bidding available through  
[www.liveauctions.tv](http://www.liveauctions.tv).

*For assistance receiving a bidders number  
please contact Mariah Miller at 712-294-  
4731. If internet issues occur during the  
auction please call Nick 309-337-6404 for  
bidding assistance.*

Welcome to the third installment of the Royal Classic Sale! This will be the deepest and most diverse set of cattle we have ever offered and we look forward to showing them off to each of you in the New Year! As a group we work diligently to improve our cattle being offered to you each and every year. Over the years we have heard great calving reports from purchases from this sale and buyers are starting to put our genetics into the donor pen which is really exciting for each of us.

New for this year's sale will be a small group of first calf heifer fall pairs from Arthur's, the work is done with this group and they are ready to go right into breeding. We have also brought in Brett Sandvold for his herd dispersal. His club calf herd is small in numbers but mighty in terms of quality. Each of his cows have a proven track record of producing dollars and the cattle sell bred up AI to leading sires. As with in the past we will have a deep set of Simmental & Angus open heifers and bred heifers to offer up in Ames, Iowa. Many of the cattle being offered are halter broke and those that aren't are extremely calm natured.

For anyone new to this sale we encourage you to come up to the sale and view the cattle in person. The Hansen Center is climate controlled and an excellent place to view cattle in the winter months. The cattle will roll into the sale site on Thursday of sale week and will be available all day Friday and Saturday for anyone who would like to look through them early. Prior to this time you may contact any of the consignors to view their lots at their individual farms. We will also have sale videos online at [www.dwyercattle.com](http://www.dwyercattle.com) for those who simply can not attend.

If you have any questions regarding this offering feel free to give any of us or our sales team a call, we love to talk cattle.

Thank you for your consideration,

***The Royal Classic Group***



***Left to Right - Ryan Hecksel, Kurt & Amy Steinbronn,  
Eric & Bridget Arthur, Jim & Stacie Mueller,  
& Brent & Connie Sharff***

*In the event of a winter storm  
we will postpone the sale  
until Sunday January 5, 2020  
at 1:30 pm. If the need arises  
we will post the postpone-  
ment on the sale website by  
noon Saturday.*

### ***Royal Classic Group...***

#### **E&B Arthur Land & Cattle**

Eric 641-430-4902

Bridget 641-430-6009

[www.ebarthurlandandcattle.com](http://www.ebarthurlandandcattle.com)

#### **Steinbronn Farms**

Kurt 319-350-8195

[www.steinbronnfarms.com](http://www.steinbronnfarms.com)

#### **Mueller Farms**

Jim 320-583-6840

Stacie 320-583-6841

Erick Barberg 651-260-1951

[www.muellerfarms.net](http://www.muellerfarms.net)

#### **Hecksel Simmental Farm**

Mayer, MN

Ryan 952-201-8662

#### **Speas Farms Inc.**

Andrew Speas

Elkhart, IA

Andrew 405-501-4747

#### **Sharff Cattle**

Maynard, IA

Brent 563-920-1016

#### **Sandvold Cattle**

Soldier, IA

Brett 712-269-2326

# The Victoria Family



**HSF Victoria P30**



**HSF Hadley E744**



**1**

## HSF Mandy F808

1/8/18 • PB Simmental • #3643481

HTP/SVF Duracell T52      Nichols Blk Destiny D12  
**THSF Lover Boy B33**      **HSF Victoria P30**  
 RP/MP Right to Love 015      BTS 91X Big Sky F632

CE	BW	WW	YW	Milk	API	TI
13.8	-1.1	59.3	82.4	18.4	134.4	68.4

AI 4/13 to Mr CCF 20-20. Safe AI

**2**

## HSF Halsey F809

1/8/18 • PB Simmental • #3643482

Mr CCF Vision      Nichols Blk Destiny D12  
**Mr CCF 20-20**      **HSF Victoria P30**  
 HTP SVF Dew the Stroke      BTS 91X Big Sky F632

CE	BW	WW	YW	Milk	API	TI
11.8	0.4	62.5	91.9	18.0	121.4	65.8

AI 4/18 to WLE Uno Mas Heifer Sexed. Safe AI

I'm never lost for words when it comes to talking about our Victoria donor. She is the cornerstone of our program and is #29 on the ASA most prolific donor cow list. Still going strong she will be 16 years young this spring. Victoria has surpassed a half of million dollars in lifetime earnings and it is easy to see why with progeny all across the country. Everyone loves a sexy red head and F808 is no exception. She is a bold constructed, sappy bellied, big boned, and massive footed, dark cherry red female. Sells bred to 20-20 for a January 20th calf this calf will be special. F809 is an extremely elegant yet stout made, big bodied, sound structured, star headed female. Sells bred to sexed heifer Uno Mas semen due the end of January. A full sibling was one of the high selling females in last years sale to Theresa Claeys for \$5000. We reserve the right to one future flush on F808, to be done at the seller's expense and the buyer's convenience.

**Hecksel's Simmental Farm**

**3**

**Royal Classic**



**Lot 3**



**THSF Lover Boy**



**Lot 4**

**3**

**HSF Vanessa G941**

3/9/19 • PB Simmental • #3644385

Remington Lock n Load  
W/C Loaded Up 1119Y  
Nichols Blk Destiny D12  
HSF Victoria P30  
Aubreys Black Blaze III  
BTS 91X Big Sky F632

CE	BW	WW	YW	Milk	API	TI
10.9	0.5	56.0	78.4	20.6	126.4	62.0

Open Heifer

G941 is an extremely hairy, long fronted, big topped, square hipped, huge footed, and big boned female that will show and make a future donor female for her new owner. We sold a full sib bred last year to Texas and another full sib sold really well last winter in Griswold Cattle Classic Female Sale. Victoria sure put her stamp on this heifer from her great hair, good bone, and impeccable structure and soundness. This one I had a hard time letting go of. We reserve the right to one future flush on G941, to be done at the seller's expense and the buyer's convenience.

**Hecksel's Simmental Farm**

**4**

**HSF Trinity F816**

1/21/18 • 3/4 Simmental • #3554097

WLE Uno Mas X549  
CAJS Blaze of Glory  
BC Lookout 7024  
HSF Dana D602  
CAJS Khloe 42ZA  
HSF Dana N41

CE	BW	WW	YW	Milk	API	TI
12.0	0.8	61.4	84.9	17.4	117.1	64.3

AI 5/2 to THSF Lover Boy. Safe AI

Here is a beautiful, moderate frame female with plenty of center dimension that has cow written all over her. Her dam is an easy keeping young female that has done an outstanding job on her first two calves. F816 grand dam was our most productive cow we owned. We shipped her this fall after weaning 15 calves at the age of almost 17. There is plenty of productivity, longevity bred in to this one. This girl will make you money for many years to come. Sells bred to Lover Boy for an early February calf.

**Hecksel's Simmental Farm**

# The Chelsea Family



**HSF Chelsea B432**



**HSF Catalina E728**



**Lot 6**

**5**

## HSF Emmy Lou F804

1/5/18 • 3/4 Simmental • #3467856

**6**

## HSF Caroline F822

2/5/18 • 3/4 Simmental • #3643488

CNS Pays to Dream  
LLSF Pays to Believe ZU194  
LLSF Ura Baby Doll

BC Lookout 7024  
HSF Chelsea B432  
HSF Chelsea X045

HTP/SVF Duracell T52  
THSF Lover Boy B33  
RP/MP Right to Love 015

BC Lookout 7024  
HSF Chelsea B432  
HSF Chelsea X045

CE	BW	WW	YW	Milk	API	TI
8.7	1.9	67.2	100.8	17.9	109.9	66.7

AI 4/22 to WLE Uno Mas Heifer Sexed. Safe AI

CE	BW	WW	YW	Milk	API	TI
13.8	-0.8	62.1	90.8	17.6	130.6	68.3

AI 5/31 to Mr CCF 20-20. Safe AI

It is females like these three that we strive to breed and produce day in and day out. Some times it works some time it don't but here it sure did. I'm not going to lie F804 is my favorite female we are bringing to Ames she always has been. Emmy Lou is extremely easy on the eyes from her stunning phenotype, powerful build, stout made, big old rugged bone and foot underneath her and as sound as a cat. Her full sibling HSF Catalina E728 was a high seller in last years sale to Bar QH Simmental, IL for \$6000 and has joined their embryo program. She sells bred to Uno Mas sexed heifer semen for the end of January calf. We sure love our Lover Boy calves and by looking at the three we have in this sale it is easy to see why. F822 is the ideal type and kind of female that can get the job done and make you money for years to come, this female is also Homozygous Polled. Females like this never go out of style sells bred to 20-20 for a beginning of March calf. We reserve the right to a future flush on both F804 and F822 to be done at the seller's expense and the buyer's convenience.

**Hecksel's Simmental Farm**

**5**

**Royal Classic**



Lot 7



**TJSC Hammer Time**

**7**

**HSF Kelsea G939**

3/2/19 • 3/4 Simmental • #3644384

HTP/SVF Duracell T52

BC Lookout 7024

**THSF Lover Boy B33**

**HSF Chelsea B432**

RP/MP Right to Love 015

HSF Chelsea X045

CE	BW	WW	YW	Milk	API	TI
14.0	-0.8	62.4	91.1	17.0	131.3	68.7

Open Heifer

Kelsea G939 will knock your socks off when you see her. She is so fresh and clean in her makeup, incredibly neat and extended front end, smooth shouldered, huge top, big ribbed, and tied together just perfectly. Great disposition, big time show heifer here! A full sib topped our online sale last year to Adyson Roberts, MN and found her way to the purple this summer. G939 is Homozygous Polled. If you wonder what her future holds or looks like just check out her two big sisters selling.

**Hecksel's Simmental Farm**

**8**

**HSF Chelsea B432 Embryos**

Donor #: 2870371 - Sire ASA #: 3185062

Mr TR Hammer 308A ET

BC Lookout 7024

**TJSC Hammer Time 35D**

**HSF Chelsea B432**

TJSC So Sweet 104X

HSF Chelsea X045

CE	BW	WW	YW	Milk	API	TI
11.6	0.0	58.9	90.1	15.2	113.3	61.8

1 package of 3 embryos by mating above.

We have high hopes for this mating. HSF Chelsea B432 was a past reserve division calf champion at the North American in Louisville a few years ago. She has been as consistent as any donor we have never missing on any mating yet. TJSC Hammer Time was the 2018 Reserve Champion bull in Denver we had several calves out of him this past year and exceeded our expectations. Guaranteeing one pregnancy if done by a certified Embryologist.

**Hecksel's Simmental Farm**

# Simmental Bred Heifers



Lot 9



WAGR Playmate 519B



Thor 503C



Lot 10

9

**STN Harmony**

4/16/18 • PB Simmental • #3531139

Mr CCF Vision

**Mr CCF 20-20**

HTP SVF Dew The Stroke

Mr HOC Broker

**WAGR Playmate 519B**

3C Melody M668 BZ

CE	BW	WW	YW	Milk	API	TI
8.2	3.0	72.0	106.2	19.6	108.8	67.7

Due 1/15/20 to Thor 503C #:3009490

Wow!! You wanna talk about a great one, here it is! Backed by an elite pedigree and a great personality to go with it. One of our 10 year old daughters showed Harmony all year with great success! This phenomenal heifer made it to the top 5 in every ring she was in! Add that to being bred to the up and coming Hammer son, owned by Mike Moser of North Dakota, and when he saw this heifer his quote was "You make damn sure you track where this heifer goes to be able to follow her calf, because the potential is for a great one." I think he is correct! Invest here and keep the rewards.

**Steinbronn Farms**

7

Royal Classic

10

**STN Boston**

4/1/18 • PB Simmental • #3531140

WS Pilgrim H182U

**TL Bottomline**

Miss Star Above

Mr CCF Vision

**JMCR Veronica 413C**

WW3 Countess 413A

CE	BW	WW	YW	Milk	API	TI
10.3	2.7	71.4	102.3	17.8	110.6	70.6

Due 4/9/20 to STN Mr Cool Cat #:3649140

Here is the leadoff of many Bottomline heifers in our offering. For those of you that don't remember Bottomline, he was the Kansas City and Louisville champion and Denver Reserve Champion bull a few years back. Wow can he produce females and cow power. These Bottomline daughters are making phenomenal cows. They all have great feet and legs and are big bodied, soggy built cows. Boston carries forward all these traits and is a beautiful baldy besides.

**Steinbronn Farms**

# Simmental Bred Heifers



Lot 11



JMSF Flick of Glitter



Profit



Lot 12

11

**STN Miss Bodacious**

2/16/18 • PB Simmental • #3564234

WS Pilgrim H182U

SS Ebony's Grandmaster

**TL Bottomline**

**JSMF Flick of Glitter**

Miss Star Above

HS Unity U334

CE	BW	WW	YW	Milk	API	TI
9.0	2.9	63.6	91.1	15.6	110.4	63.8

Due 3/22/20 to STN Mr Cool Cat #:3649140

You wanna talk about a Stacked Pedigree of champions it doesn't get any better than this. Bottomline a Reserve National Champion, this girl has it all. She got the best from both sides of her pedigree, a clean front, and massive mid section from mom and big sound feet and legs from dad, and did I mention her massive mid section! This one is gonna leave her mark in any program and needs to be in someone's donor pen.

**Steinbronn Farms and E&B Arthur Land & Cattle**

12

**CAG Ms Satana 155F ET**

2/14/18 • PB Simmental • #3461791

WS Pilgrim H182U

Mr TR Hammer 308A ET

**Profit**

**HCC0 Countess 32D**

WAGR Panarama 204Z

HCC0 Countess 111B

CE	BW	WW	YW	Milk	API	TI
7.7	3.0	66.9	96.5	21.1	108.0	65.8

Due 3/17/20 to STN Mr Cool Cat #:3649140

There isn't much more to say about the Profit daughters that hasn't already been said and seen around the country. They are just flat out good and this one fits the same mold. Her full sister is a gorgeous red head that demanded \$70,000 at last year's Hartman cattle sale and this one has all the same pieces.

**Steinbronn Farms**

# Mueller Farms Offering



Lot 13



HSF Liberty Bell X004



Lot 14

13

**JSMF Lacie**

3/20/18 • PB Simmental • #3393629

W/C United 956Y W/C Wide Track 694Y  
W/C Executive Order 8543B HSF Laura A324  
Miss Werning KP 8543U HSF Liberty Bell X004

CE	BW	WW	YW	Milk	API	TI
11.2	0.5	71.6	113.1	25.5	118.0	73.3

AI 4/26 to THSF Lover Boy. No bull exposure

W/C Executive Order has been producing incredible females across the country and JSMF Lacie is no exception. Check out her spring of rib and depth of body, powerful long square hip, balanced EPDS, and structural correctness. This is one we should be keeping, especially if you ask the boys, who had a successful show career with her. Safe in calf to THSF Loverboy, the 2016 Denver Champion Bull, this purebred baby should be spectacular! Beautiful, easy fleshing, mild temperament, complete heifer ready to make you money!

**Mueller Farms**

14

**JSMF/LNMS Rock Star**

3/23/19 • 3/4 Simmental • #3557603

Yardley Utah Y361 CNS Pays to Dream  
W/C Relentless 32C SC Ruby B103  
Miss Werning KP 8543U Akers Ruby 2184

CE	BW	WW	YW	Milk	API	TI
10.0	2.7	61.1	87.8	21.3	109.5	62.5

Open Heifer

WOW, was I impressed after Rock Star left the clipping chute! This W/C Relentless daughter has the look to compete just like many other champion siblings from their \$87,500 high selling daddy. Long bodied, powerfully built, beautiful fronted and shown as a calf, this girl has all the right pieces. SC Ruby B103, has proven herself once again, producing striking females for this sale. Make sure this one is on your trailer heading home, she will be fun!

**Mueller Farms & Schauer**

# Simmental Bred Heifers



Lot 15



Lot 16

15

**JSMF Peggy Sue**

3/14/18 • PB Simmental • #3393631

SDS Graduate 006X WLE Uno Mas X549  
**CCR Wide Range 9005A** HSF/Learns Paige D617  
 CCR Ms Apple 9332W Learns Priscilla

CE	BW	WW	YW	Milk	API	TI
9.0	1.8	72.5	107.4	14.9	118.7	69.5

AI 5/20 to TJ Main Event. Vet called Safe AI.  
 PE JSMF/FVF Firehouse (ASA #: 3393616)

Peggy Sue had other plans than posing for a decent picture, but don't let that fool you. This Wide Range daughter has a body worth showing off! Seeing her in person, you'll appreciate her wide top, huge spring of rib, level hip and feminine front. Her Main Event calf will be valuable whether it's a heifer or bull. Buy with confidence, she's a complete package.

**Mueller Farms**

16

**JSMF Liberty**

2/15/18 • 3/4 Simmental • #3393620

TNT Tuition U238 JSMF Moonstone  
**W/C United 956Y** JSMF Luna  
 Miss Werning 956W JSMF Ice Queen X101

CE	BW	WW	YW	Milk	API	TI
9.9	2.1	83.0	130.1	20.9	115.7	75.7

AI 4/27 to THSF Lover Boy. Vet called Safe AI.  
 PE JSMF/FVF Firehouse (ASA #: 3393616)

What a powerful one here! Massive hip, huge spring of rib, ton of depth, what's not to love? This girl has what it takes to produce some money, whether you're in the steer, bull or heifer business. Balanced EPDs, and bred to Lover boy, she's a win, win all the way home!

**Mueller Farms**

# The Carmella Family



Lot 17



HSF Carmella B410



HSF Claudette E709



Lot 18

17

**HSF Adrianna F805**

1/5/18 • PB Simmental • #3643486

WS Pilgrim H182U

LLSF Uprising Z925

TKCC Carver 65C

HSF Carmella B410

Ford RJ Dolly Y83

HSF Victoria P30

CE	BW	WW	YW	Milk	API	TI
8.9	1.2	70.4	93.9	14.7	119.0	70.5

AI 4/24 to Mr CCF 20-20. Safe AI

18

**HSF Abigail F813**

1/10/18 • PB Simmental • #3643487

WS Pilgrim H182U

LLSF Uprising Z925

TKCC Carver 65C

HSF Carmella B410

Ford RJ Dolly Y83

HSF Victoria P30

CE	BW	WW	YW	Milk	API	TI
8.9	1.2	70.4	93.9	14.7	119.0	70.5

AI 5/1 to CCR Wide Range 9005A. Safe AI

Carmella has definitely risen to the top of our donor program the past few years and really has hit her stride. It is surly evident when you look at these four daughters. She produced the high selling Simmy female in last years sale HSF Claudette E709 to John & Alicia Sandidge of Bar QH Simmentals, IL for \$11000 and has joined their donor lineup. Another daughter HSF Callie D613 we sold as a bred heifer to Buck Creek Ranch, OK her first calf BCR Perfect Vision was division champion in Denver and Fort Worth and went on to be Reserve Champion bull in Fort Worth were he was a high seller in the Cowtown Classic Sale for \$26500 to Hicks Cattle Company, IN and he was Champion Bull at the American Royal in Kansas City and is the reigning Reserve National Champion bull at the North American in Louisville. F805 has been a favorite around here, along with her sister F813 both are big footed, big boned, sound, really neat fronted with plenty of body and rib shape. We reserve to right to a future flush on both F805 and G951 to be done at the seller's expense and the buyer's convenience.

**Hecksel's Simmental Farm**

# The Carmella Family



BCR Perfect Vision



Ruby's Turnpike 771E



Lot 20

19

HSF Carly G951

3/16/19 • PB Simmental • #3644386

WBF Significant B132

LLSF Uprising Z925

Ruby's Turnpike 771E

HSF Carmella B410

Ruby's Miss Cleo 240Z

HSF Victoria P30

CE	BW	WW	YW	Milk	API	TI
8.2	2.8	80.5	121.7	18.4	121.0	75.4

Open Heifer

20

HSF Darla F825

2/7/18 • PB Simmental • #3643489

TJ Main Event 503B

LLSF Uprising Z925

CDI Innovator 325D

HSF Carmella B410

CDI Ms Shear Force 49U

HSF Victoria P30

CE	BW	WW	YW	Milk	API	TI
10.6	1.1	81.4	123.3	20.9	138.9	82.6

AI 5/12 to Mr CCF 20-20. Safe AI

F825 is a nice Innovator heifer that will make a great cow. All three bred up to calve early February the two bred to 20-20 would have calves that would be 3/4 sibs in blood to BCR Perfect Vision. Last but not least the sweet disposition natural calf of Carmella and Turn Pike is a cool made breeding piece and show heifer that is sweet necked, big bodied, stout made, good footed blaze face heifer. There is definitely some donor prospects in these sisters. We reserve to right to a future flush on both F805 and G951 to be done at the seller's expense and the buyer's convenience.

Hecksel's Simmental Farm

# The Sheeza Beauty Family



**HSF/HS Sheeza Beauty U823**



**HSF Hayden E734**



**21**

**HSF Sheena F842**

3/9/18 • PB Simmental • #3643490

Mr CCF Vision      CNS Dream On L186  
**Mr CCF 20-20**      **HSF/HS Sheza Beauty U823**  
 HTP SVF Dew the Stroke      SVF Sheza Beauty L901

CE	BW	WW	YW	Milk	API	TI
13.6	0.6	65.7	97.4	18.6	111.0	63.7

AI 4/22 to CCR Wide Range 9005A. Safe AI

**22**

**HSF Shay F801**

1/1/18 • PB Simmental • #3643485

W/C No Remorse 763Y      CNS Dream On L186  
**W/C BF Innocent Man**      **HSF/HS Sheza Beauty U823**  
 Miss Werning 174Y      SVF Sheza Beauty L901

CE	BW	WW	YW	Milk	API	TI
11.4	-0.1	51.2	71.2	23.4	105.7	57.3

AI 4/18 to CCR Wide Range 9005A. Safe AI

Here is a trio of maternal sibs out of our Sheza Beauty donor that is a full sib to the great Steel Force bull. F801 is a freak fronted, stout made, big boned female that will make a great cow whether it be the purebred or club calf production. In last years sale an Innocent Man female was the high selling Simmental heifer. F842 is a moderate framed, soft made female that has that maternal look to become a great cow. Her full sib HSF Hayden E734 was one of the high sellers in last year's sale to Kade Knapp, IA for \$7750. Both breds sell bred up to calve end of January to the calving ease bull Wide Range. G935 the rocket fronted half blood female that is long bodied, big middle heifer that has the look. There are a few full sibs to this Insight heifer we sold and they make amazing cows with perfect udder.

**Hecksel's Simmental Farm**

# Simmental Open Heifers



**HSF Melania D618**



**HSF Jezebel B402**



**23**

**HSF Silvia G935**

2/26/19 • 1/2 Simmental • #3644383

SAV Brilliance 8077

CNS Dream On L186

PVF Insight 0129

HSF/HS Sheza Beauty U823

PVF Missie 790

SVF Sheza Beauty L901

CE	BW	WW	YW	Milk	API	TI
12.4	0.0	65.2	99.7	20.8	98.4	61.8

Open Heifer

**24**

**HSF Makayla G920**

2/4/19 • 3/4 Simmental • #3644381

Mr CCF Vision

BSF Opportunist Z5

Mr CCF 20-20

HSF Melania D618

HTP SVF Dew the Stroke

HSF Jezebel B402

CE	BW	WW	YW	Milk	API	TI
10.9	1.6	74.8	112.5	17.5	111.5	70.1

Open Heifer

**G935 - See footnote on previous page.** G920 is the heifer that everyone that stopped by and looked at cattle since this one was born said what is that one. She has been a standout since day one, her picture does not do her justice. Her dam HSF Melania D618 we didn't get a chance to get a new donor picture of her yet but she is one of our most impressive females in terms of phenotype and structure. Her grand dam HSF Jezebel B402 is one of our all time favorite females we have ever raised. We IVF her twice as a heifer and sold her in the Jewels of Northland sale where she was the high seller at \$25000 to Ron Shivers, IA. This females great grand dam is non other than HSF/HS Sheza Beauty U823 a full sib to the great Steel Force bull. Makayla is an elegant made female with the power, bone, structure, and look to be a great show heifer and donor cow. She is Homozygous Black and Homozygous Polled. We reserve the right to a future flush to be done at the seller's expense and the buyer's convenience.

**Hecksel's Simmental Farm**

# Simmental Bred Heifers



Lot 25



Mindemann Blacklass



Lot 26

25

**EBA Fergie F003**

1/2/18 • PB Simmental • #3645726

Mr NLC Upgrade U8676      Hooks Shear Force 38K  
**Sandeen Upper Class 2386**      **JSF Miss Force Y9**  
 Sandeen Donna 7386      JSF Katrina W54

CE	BW	WW	YW	Milk	API	TI
11.0	0.9	61.8	88.1	20.8	123.1	67.9

AI 5/30 to Mr CCF 20-20. Vet called safe AI on 9/19.  
 PE 6/5/19 till 9/1/19 to C-Bar-RJ Reckoning Red Angus #1723361

If this one doesn't get your heart pumping I'm not sure what we can do. Fergie has been a standout since day one. Beautiful baldy with a great disposition, awesome look, and a powerful productive family tree. This Upper Class daughter is carrying a heifer by 20-20 to make this deal a no brainer.

**E&B Arthur Land & Cattle**

26

**EBA Finley F502**

1/24/18 • 3/4 Simmental • #3645730

CNS Dream On L186      W/C No Remorse 763Y  
**WLE Uno Mas X549**      **EBA/C-F Dayton D502**  
 Shawnee Miss 770P      Mindemann BlackLass

CE	BW	WW	YW	Milk	API	TI
11.1	0.2	57.9	77.8	19.4	113.1	64.8

AI 5/30 to WLE Big Deal. Vet called PE bred 45 days on 9/19.  
 PE 6/5/19 till 9/1/19 to C-Bar-RJ Reckoning Red Angus #1723361

This Uno Mas daughter goes back to the foundation donor Mindemann Black Lass for our program as well as Chase Farms. This female screams cow power with her added rib shape, depth of body, and powerful foot work. We were unable to fetal sex this female at preg check time but rest assured she is bred to a really impressive Red Angus calving ease sire.

**E&B Arthur Land & Cattle**

# Simmental Bred Heifers

## 27

### EBA Fiona F017

2/3/18 • 1/2 Simmental • #3645735

CNS Dream On L186

TR 004 Traveler 3014

WAGR Driver 706T

TR Ms Katinka 6174S

3C Melody M668 BZ

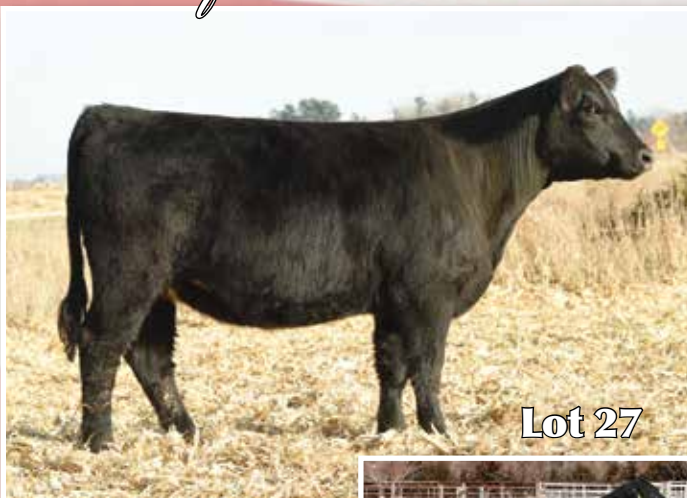
TR Ms Katinka 3208N

CE	BW	WW	YW	Milk	API	TI
-	-	-	-	-	-	-

AI 5/30 to Mr CCF 20-20. Vet called PE bred 45 days on 9/19.  
PE 6/5/19 till 9/1/19 to C-Bar-RJ Reckoning Red Angus #1723361

We purchased this female as embryos a few years back in Denver and boy where we excited with the results. Katinka 6174S has been a dominant donor for the Thomas Ranch and this female fits her dam's mold. Straight in her lines, and built with longevity in mind. Bid with confidence as this type never goes out of style! Carrying a bull.

**E&B Arthur Land & Cattle**



Lot 27



TR Ms Katinka 6174S

## 28

### EBA Felicia F52

1/9/18 • PB Simmental • #3645727

SVF Steel Force S701

Mr TR Hammer 308A ET

Mr HOC Broker

EBA Journey 20C1

JM BF H25

RGRS Clarice 20Y

CE	BW	WW	YW	Milk	API	TI
8.2	2.0	67.9	99.6	16.9	101.4	63.5

AI 5/30 to Mr CCF 20-20. Vet called PE bred 70 days on 9/19.  
PE 6/5/19 till 9/1/19 to C-Bar-RJ Reckoning Red Angus #1723361

Broker x Hammer usually leads to quality and it did the trick again right here! This perfect baldy female has added foot, bone, and capacity. This great dispositioned female will likely produce a red one with her mating to Reckoning, a son of the famed Damar Mimi W085, one of the top females in the breed. Carrying a bull.

**E&B Arthur Land & Cattle**



Lot 28



Damar Mimi W085

## 29

### EBA Fancy F005

1/14/18 • PB Simmental • #3645728

Mr NLC Upgrade U8676

HTP SVF In Dew Time

Sandeep Upper Class 2386

TBSF Lyla 34Y

Sandeep Donna 7386

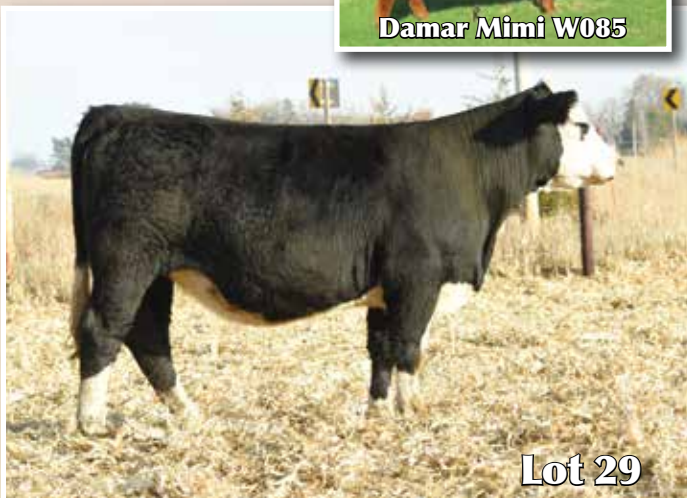
SS Ebony's BLK Jade

CE	BW	WW	YW	Milk	API	TI
12.4	0.8	64.2	90.6	17.8	117.8	67.8

AI 5/30 to Mr CCF 20-20. Vet called PE bred 60 days on 9/19.  
PE 6/5/19 till 9/1/19 to C-Bar-RJ Reckoning Red Angus #1723361

Here is a powerful, broody daughter of Upper Class who is sure to catch your eye. This female is stout and moderate framed, her added power would lend her well if you wish to make high impact percentage steers down the line. Or breed her up for an exciting set of females. Carrying a heifer.

**E&B Arthur Land & Cattle**



Lot 29

# TL Bottomline Bred Heifers

## 30

### STN Miss Gem

1/2/18 • PB Simmental • #3649132

WS Pilgrim H182U

Mr NLC Upgrade U8676

**TL Bottomline**

**Flicka's Shimmering Gem**

Miss Star Above

JSMF Flick of Glitter

CE	BW	WW	YW	Milk	API	TI
8.1	4.6	77.6	112.8	12.7	105.9	69.1

Due 4/4/20 to STN Mr Cool Cat #:3649140

Here is the most massive rib shaped one in the whole offering. Her nickname is "The Whale" and she carries it well. Again her royal pedigree is backed by the great Miss Flicka cow. If we weren't bringing and selling our best this one would definitely be going to our donor pen.

**Steinbronn Farms**



Lot 30

## 31

### STN Miss Night

3/1/18 • PB Simmental • #3649138

WS Pilgrim H182U

ZKCC Chopper 844U

**TL Bottomline**

**JSMF/FVF Night Glitter**

Miss Star Above

FVF Glitter in the Air

CE	BW	WW	YW	Milk	API	TI
9.8	2.3	64.6	91.1	15.2	109.8	65.4

Due 2/20/20 to CCR Boulder 1339A #:2880390

Miss Night is a moderate framed Bottomline daughter who carries all of Bottomlines traits. Sound feet and legs, big bodied and very stylish. Her Grandma was a very productive donor for the Mueller and Barberg operation, who raised many great ones for them. And her legacy just keeps going with this one! She is AI'd to the easy calving Boulder bull.

**Steinbronn Farms**



Lot 31

## 32

### STN Miss Vernie

2/4/18 • PB Simmental • #3649139

WS Pilgrim H182U

Mr CCF Vision

**TL Bottomline**

**JMCR Veronica 413C**

Miss Star Above

WW3 Countess 413A

CE	BW	WW	YW	Milk	API	TI
-	-	-	-	-	-	-

Due 4/9/20 to STN Mr Cool Cat #:3649140

Our Veronica 413C donor started her career at our farm as a show heifer for our oldest daughter. Together they had an amazing year winning many purple ribbons! Veronica has not disappointed since going to our donor pen, I believe Miss Vernie has all the right pieces to raise many that will do the same. Bred to our Cool Cat herd bull, who is a Revival Son. This heifer will surely add some style and power to your herd!

**Steinbronn Farms**



Lot 32

17

Royal Classic

# TL Bottomline Bred Heifers

## 33

### STN Miss Asset

1/30/18 • 1/2 Simmental • #3649133

WS Pilgrim H182U

TL Bottomline

1151

Miss Star Above

CE	BW	WW	YW	Milk	API	TI
10.6	2.2	60.1	85.0	13.2	100.9	62.5

Due 4/4/20 to STN Mr Cool Cat #:3649140

A few years back we sold a baldy heifer named Asset that topped the sale, this girl is out of the same damn! I believe if you put a white face on this one she has the potential to do the same. Look at that front end, long spine and Bottomline middle.

**Steinbronn Farms**



Lot 33

## 34

### STN Miss Spark

2/2/18 • PB Simmental • #3649137

WS Pilgrim H182U

FBF1 Combustible

TL Bottomline

JRA Powerful Spark 413B

Miss Star Above

RCC Powerfully Sweet

CE	BW	WW	YW	Milk	API	TI
10.4	2.9	69.8	106.0	15.4	105.0	63.7

Due 2/20/20 to CCR Boulder 1339A #:2880390

A little smaller but well put together heifer here. Talking with our ABS breeder I said need a very easy calving 1/2 blood Simmental bull to breed a few small heifers to. Without hesitation he just pulled out CCR Boulder a hoover dam son and said we are using this. So we did.

**Steinbronn Farms**



Lot 34

## 35

### STN Miss Glitter

1/1/18 • 3/4 Simmental • #3649136

WS Pilgrim H182U

PZC TMS Firestorm

TL Bottomline

STN Glittering Fire

Miss Star Above

HHSF Black Glitter

CE	BW	WW	YW	Milk	API	TI
10.3	1.4	61.4	90.6	19.1	99.6	60.2

Due 2/21/20 to Thor 503C #:3009490

This one just did not wanna cooperate on picture day, but to see her in person does her more justice any way. The combination of Bottomline and Firestorm, the great red angus bull, just flat worked here. Very powerful, sound, and big footed. The Black Glitter pedigree in there is also an added benefit. This one has been one of my favorites since day one.

**Steinbronn Farms**



TL Bottomline



**Lot 36**



**Sandeen Donna 4325**



**36**

**SFIS Foxy Lady G71**

4/17/19 • PB Simmental • #3642947

W/C Loaded Up 1119Y SVF Steel Force S701  
JASS On The Mark 69D Long's Foxy Lady  
JASS Sable's Time 53X Long's Miss Sweets

CE	BW	WW	YW	Milk	API	TI
10.0	2.8	64.6	90.8	15.8	115.1	63.4

Open Heifer

Show heifer deluxe, this April On The Mark heifer is sure to catch the judges attention, great haired, long fronted and big barreled. Out of Long's Foxy Lady who had a great show career herself. We expect big things from this heifer in the show pen and in the donor pen down the road.

**Speas Farms Inc.**

**37A-C**

**SFIS Crystal Gayle Embryos**

PB Simmental Donor #: 3268331

A. W/C Bankroll IVF Sexed Profit  
B. W/C Relentless IVF Unsexed SFIS Crystal Gayle  
C. MINN Class on Class IVF Sandeen Donna 4325  
Unsexed

3 packages of 3 embryos by mating above.

Rare opportunity to purchase genetics from this highly touted Red Baldy Profit daughter, when ever this Red beauty was taken to town she always drew a crowd whether she was in her work clothes or show ready she was quite impressive. The proof is in the pudding and this cow is further proof of what the Sandeen cow families can do for your program. Crystal Gayle has put up some impressive flush numbers so we have decided to offer a limited number of embryos. Guarantee one pregnancy per package if work is done by certified embryologist.

**Speas Farms Inc.**

# Simmental Bred Heifers

## 38

### SFIS FELICIA F8

3/19/18 • PB Simmental • #3429091

SVF Steel Force S701

Remington Lock n Load

Mr HOC Broker

Sandeen Donna 4325

JM BF H25

Sandeen Donna 8386

CE	BW	WW	YW	Milk	API	TI
6.6	2.4	64.0	93.6	17.5	106.1	60.8

AI 6/7 to W/C Night Watch - No Bull Exposure

This red heifer has a lot of chrome and definitely stands out in a crowd, we really appreciate her depth of body and soundness though out her structure. Maternal sister to SFIS CRYSTAL GAYLE which is one of many great heifers that Sandeen Donna 4325 has produced for us in her short career as a donor.

**Speas Farms Inc.**



Lot 38

## 39

### RS&T Sniper Ana F223

3/3/18 • PB Simmental • #3378628

Remington Lock n Load

W/C United 956Y

W/C Sniper 41B

6JWD Ana

Miss Werning KP 8543U

JSMF Ella

CE	BW	WW	YW	Milk	API	TI
12.3	0.6	69.1	105.7	22.5	128.0	73.5

AI 5/27 to W/C Night Watch - No Bull Exposure

This black beauty is the product of a purchase we made from RS&T at the Gathering at Shoal Creek in 2018. Just like her mother she has a lot of the same qualities that made our decision to purchase easy, deep bodied, good boned, smooth shouldered and ultra-feminine. Our vet was 99% sure she is carrying a heifer calf.

**Speas Farms Inc.**



Lot 39

## 40

### SFIS Miss Uprising F59

2/21/18 • 5/8 Simmental • #3641148

Heads Up 20X ET

3C Picasso F955 BZ

LLSF Uprising Z925

LVCC Mrs Picasso 180

LLSF Untouchable U925

T180\_

CE	BW	WW	YW	Milk	API	TI
-	-	-	-	-	-	-

AI 5/29 to W/C Night Watch - No Bull Exposure

Here is one that has cow written all over her, she is soft in pasterns, massive in her middle and wide in her pins. Out of the mother of She's So Sweet she has the cow power in her lineage, this Uprising daughter should produce for years to come.

**Speas Farms Inc.**



Lot 40

# The Liberty Bell Family



Lot 41



HSF Liberty Bell X004

HSF Maddie G914

41

1/13/19 • 3/4 Simmental • #3644380

SDS Graduate 006X

CCR Boulder 1339A

CCR Wide Range 9005A

HSF Uma E712

CCR Ms Apple 9332W

HSF Liberty Bell X004

CE	BW	WW	YW	Milk	API	TI
13.2	-0.9	64.2	100.8	18.3	130.0	70.4

Open Heifer

This girl has show heifer stamped all over her. She can talk the talk and walk the walk on any level you show her at. Maddie has the biggest personality in the barn the first one to come up to the gate to greet you every time. Hands down the best disposition laid back attitude you could ever ask for but put a halter on her and she is as cocky and up headed as you can get. Would be a great confidence building heifer for a young kid of any age. G914 is long bodied, big ribbed, big topped, smooth shouldered, rocket fronted, and extremely sound structured. Backed by a royal pedigree her dam was a first calf heifer out of our Liberty Bell donor that was a direct daughter to the great Triple C Miss Liberty female that was Reserve Champion Female in Denver a few years back. This heifer will not only show but make one heck of a good cow and donor. She has a white start on her forehead for that extra show ring flare to catch the judges attention.

Hecksel's Simmental Farm



Lot 42

HSF Gabby F855

42

3/28/18 • PB Simmental • #3643492

3C W/C Right Track

SVF Steel Force S701

W/C Wide Track 694Y

HSF Liberty Bell X004

Miss Werning 694S

Triple C Miss Liberty P1

CE	BW	WW	YW	Milk	API	TI
8.9	2.6	65.1	102.0	18.8	106.6	61.7

AI 5/17 to WLE Uno Mas Heifer Sexed. Safe AI

Gabby is the true definition of elegance and femininity when it comes to cattle. Here is your chance to buy a granddaughter of a past Denver Champion Triple C Miss Liberty. Her donor dam Liberty Bell has made her mark on our program and many others. We sold a full sib to this female several years back to Mueller Farms HSF Laura A324 she has done an outstanding job for them be sure to check out her daughter JSMF Lacie in this very sale as Lot 13. Another one to check out is Maddie G914 one of my favorite opens we are selling in this sale is out of a maternal sib to this girl. These Liberty Bell daughters can produce good ones the proof is in this very sale. Sells bred to Uno Mas sexed heifer semen for a February calf.

Hecksel's Simmental Farm

# The Sazerac Family



Lot 43



SVF/BT Sazerac Y702



Myers Queen Sazerac



Lot 44

43

**HSF/Learn's Shane G927**

2/13/19 • PB Simmental • #3644382

WBF Significant B132 HC Power Drive 88H  
**Ruby's Turnpike 771E** SVF/BT Sazerac Y702  
 Ruby's Miss Cleo 240Z Myers Queen Sazerac

CE	BW	WW	YW	Milk	API	TI
7.3	2.9	70.7	109.3	22.8	115.4	69.2

Open Heifer

44

**HSF/Learn's Farrah F845**

3/13/18 • 3/4 Simmental • #3643491

OMF Double Shot Z10 HC Power Drive 88H  
**KRMS Primary Candidate** SVF/BT Sazerac Y702  
 BDK Better Foundation Myers Queen Sazerac

CE	BW	WW	YW	Milk	API	TI
6.6	1.6	53.6	82.4	25.1	101.0	56.2

AI 4/17 to THSF Lover Boy. Safe AI

Here is a pair of maternal sisters out of our SVF/BT Sazerac Y702 donor. Shane is a beautiful baldy open heifer that has a sweet disposition that would be a great show heifer for the youngest exhibitor. She was the tame heifer that stood by the picture pen when we pictured the rest. Sired by Rubys Turnpike bull who's first calves are selling this fall. He was our largest sire group this year and we love his calves as well as any sire group we had. The star face bred heifer sired by the Triple Crown Winning bull Primary Candidate bull that we knew we had to use after seeing him in Louisville and Denver that year. Sells bred to Lover Boy for a January 24 calf.

**Hecksel's Simmental Farm & Learn's Simmentals**

# WLE Big Deal Bred Heifers

## 45

### EBA Faith F19

1/15/18 • 1/2 Simmental • #3645729

SVF Steel Force S701

Silveiras Style 9303

WLE Big Deal A617

4WA Blackbird 111

Shawnee Miss 770P

LF Ms Lynn R35

CE	BW	WW	YW	Milk	API	TI
12.0	-0.9	47.8	65.6	18.1	108.6	60.9

AI 5/30 to Dew North. Vet called safe AI on 9/19.

PE 6/5/19 till 9/1/19 to C-Bar-RJ Reckoning Red Angus #1723361

We really like how these Big Deal females developed throughout the summer. They are extra long bodied, good frame size, and have a great look about them. This female sells bred up safe AI to Dew North and is carrying a bull. To further sweeten the deal her dam has placed cattle into this sale year after year!

**E&B Arthur Land & Cattle**

## 46

### EBA Farrah F46

2/9/18 • PB Simmental • #3645732

SVF Steel Force S701

Mr TR Hammer 308A ET

WLE Big Deal A617

PZC/EBA Glitter & Sparkle

Shawnee Miss 770P

HHSF Black Glitter

CE	BW	WW	YW	Milk	API	TI
8.5	2.1	65.3	94.3	18.3	106.4	66.5

AI 5/30 to Mr CCF 20-20. Vet called PE bred 85 days on 9/19.

PE 6/5/19 till 9/1/19 to C-Bar-RJ Reckoning Red Angus #1723361

This Big Deal female goes back to the great HHSF Black Glitter cow family who needs little introduction. This sleek necked, long bodied female has that added frame we are all searching for. Coupled with a long and level hip. She is carrying a bull.

**E&B Arthur Land & Cattle**

## 47

### EBA Franny F50

2/5/18 • 3/4 Simmental • #3645731

SVF Steel Force S701

Ruby NFF Incentive 307

WLE Big Deal A617

NFF Miss Dice D120

Shawnee Miss 770P

NFF Miss Dice S128

CE	BW	WW	YW	Milk	API	TI
13.8	-1.4	46.7	62.4	21.6	110.4	59.6

AI 5/30 to Dew North. Vet called PE bred 45 days on 9/19.

PE 6/5/19 till 9/1/19 to C-Bar-RJ Reckoning Red Angus #1723361

Here is another striking Big Deal daughter who comes out of a past purchase from the Nelson Family of Decorah, IA. We really like her flat muscle design, and smooth front one-third. We were unable to fetal sex this one.

**E&B Arthur Land & Cattle**



Lot 45



Lot 46



Lot 47

# Simmental Bred Heifers

## 48

### EBA Faye F41

3/22/18 • 3/4 Simmental • #3645736

WS Pilgrim H182U

LLL/WMCC Big Softy

STN/EBA Mr Rambler

EBA Hailey C006

JSMF Flick of Glitter

SAS Serena X031

CE	BW	WW	YW	Milk	API	TI
9.4	3.7	66.0	94.9	21.9	99.4	60.6

AI 5/30 to WLE Big Deal. Vet called PE bred 90 days on 9/19.  
PE 6/5/19 till 9/1/19 to C-Bar-RJ Reckoning Red Angus #1723361

A standout female by our Pilgrim son who is sure to find her share of friends sale week. F41 is long necked, bold ribbed, and striking on the profile. This leading lady is carrying a heifer.

**E&B Arthur Land & Cattle**



Lot 48

## 49

### EBA Frenchie F15

2/23/18 • 1/2 Simmental • #3645733

WS Pilgrim H182U

TC Total 410

STN/EBA Mr Rambler

Pine View Forever Lady W098

JSMF Flick of Glitter

PVCA Forever Lady

CE	BW	WW	YW	Milk	API	TI
8.8	2.0	69.0	103.2	21.9	123.0	73.1

AI 5/30 to Mr CCF 20-20. Vet called safe AI Bred on 9/19.  
PE 6/5/19 till 9/1/19 to C-Bar-RJ Reckoning Red Angus #1723361

We have offered multiple daughters by Forever Lady W098 in the past as she simply never misses. This female by our Pilgrim son is long and level in her lines and great when set in motion. Our vet couldn't fetal sex this one at pregnancy check time.

**E&B Arthur Land & Cattle**



Lot 49

## 50

### EBA Francis F38

2/26/18 • 3/4 Simmental • #3645734

Mr TR Hammer 308A ET

Flying B Cut Above

EBA Black Hammer

EBA Queen Elsa C15

HHSF Black Glitter

Pine View Forever Lady

CE	BW	WW	YW	Milk	API	TI
5.7	4.0	74.9	116.7	20.9	107.4	68.0

AI 5/30 to Dew North. Vet called safe AI Bred on 9/19.  
PE 6/5/19 till 9/1/19 to C-Bar-RJ Reckoning Red Angus #1723361

Our herd sire Black Hammer is getting the job done for us producing cattle with added power and substance. This great dispositioned female is carrying a heifer by Dew North.

**E&B Arthur Land & Cattle**



Lot 50

# Simmental Bred Heifers



Lot 51



W/C Lock Down



Lot 52

51

**JSMF/FVF Andromeda**

3/17/18 • PB Simmental • #3393609

WLE Uno Mas X549 DHF Jades Dreamworks  
CAJS Blaze of Glory HS/HSF Jaded Lizzy X44  
CAJS Khloe 42ZA AJE-RCC Lizzys Pearl

CE	BW	WW	YW	Milk	API	TI
8.0	1.9	67.2	93.5	18.9	115.3	67.2

AI 5/6 to W/C Lock Down. Vet called Safe AI.

PE JSMF/FVF Firehouse (ASA #: 3393616)

What a beautiful cow in the making! Andromeda is powerful, deep, wide sprung and structurally correct. She reminds me of her dam, Lizzy. She is one of my favorite, a cow that doesn't skip a beat, is easy keeping, has a mild temperament, and produces a good one every year. I would expect no less from this daughter. Bred to W/C Lock Down, the results will be exciting!

**Mueller Farms**

52

**JSMF Sunset**

3/2/18 • PB Simmental • #3393621

STF Dominance T171 Triple C Invasion R47  
FBF1 Supremacy ESU59  
HTP SVF Dew The Stroke ESP63

CE	BW	WW	YW	Milk	API	TI
7.9	3.7	63.1	91.0	16.7	112.6	61.8

AI 5/21 to CLRS Dividend. Vet called Safe PE.

PE JSMF/FVF Firehouse (ASA #: 3393616)

ESU59, the dam of Sunset, is going on 12 years old, has raised a calf every year, and is still going strong. A full sister, JSMF Eminence, sold bred for \$8000, and many others that went on to be successful breeding pieces. There is longevity, productivity, and performance in this cow family. Sunset is following the pattern, with her long square hip, depth of body, correct feet and legs, and feminine front.

**Mueller Farms**

# Simmental Bred Heifers



Lot 53



SSC Shell Shocked



Lot 54

53

**JSMF Olivia**

4/1/18 • PB Simmental • #3393625

Yardley Impressive T371      PVF-BF BF26 Black Joker  
**Yardley High Regard W242**      **Learns Opra**  
 Miss Yardley T68      Learns Sheza Odette

CE	BW	WW	YW	Milk	API	TI
5.5	3.3	62.4	95.6	25.1	103.0	58.9

AI 5/20 to SSC Shell Shocked. Vet called Safe AI.  
 PE JSMF/FVF Firehouse (ASA #: 3393616)

Olivia is a feminine made, long topped, clean fronted, complete package. High Regard daughters have been selling and showing at the top across the country. The potential of her Purebred SSC Shell Shocked calf is unlimited. Take this sweet, young lady home and you won't be disappointed.

**Mueller Farms**

54

**JSMF/FVF Whiskey Baby**

3/30/18 • PB Simmental • #3393622

SVF Steel Force S701      Sandeen's SOS  
**FBF1 Combustible**      **HSF Baby Doll W959**  
 Lazy H Burn Baby Burn      HSF Victoria P30

CE	BW	WW	YW	Milk	API	TI
9.4	2.3	58.6	88.8	15.1	106.2	58.2

AI 4/27 to SSC Shell Shocked. Vet called Safe AI.  
 PE JSMF/FVF Firehouse (ASA #: 3393616)

If you like them stout boned, long bodied, clean fronted, and hairy, this Combustible daughter is for you! Her Dam, HSF Baby Doll, along with her grand dam Victoria, have stamped out plenty of good ones, and Whiskey Baby is no exception. Bred to SSC Shell Shocked, her PB calf should come easy and take off like a weed, with added depth and show ring appeal. Don't let this one get away!

**Mueller Farms**

## 55

### STN Pride's Majesty

4/16/18 • PB Simmental • #3531141

Mr CCF Vision

WS Pilgrim H182U

Mr CCF 20-20

BIZ Pridette 754B

HTP SVF Dew The Stroke

Werning Prima Donna

CE	BW	WW	YW	Milk	API	TI
11.6	1.1	66.8	94.8	20.7	119.3	71.4

Due 2/21/20 to Thor 503C #:3009490

Here is a great heifer out of our best donor, 754B who is a Pilgrim daughter. Here is an absolute true breeding piece. A freak fronted, long spined, big ribbed elegant 20/20 daughter that is AI'd to the Thor bull. A heifer here that you can take home with confidence that she is going to make some great ones down the road.

**Steinbronn Farms**



Lot 55

## 56

### STN Miss Maxie Belle

1/20/18 • 1/2 Simmental • #3649134

Dameron First Class

DJ Salute G509

Colburn Primo 5153

JSC/RSF Maxi Belle 1U

Silveiras Saras Dream

JAH Miss Maxi Belle

CE	BW	WW	YW	Milk	API	TI
-	-	-	-	-	-	-

Due 2/21/20 to Thor 503C #:3009490

This one is a result from a pregnancy we purchased from Seth Plendl and we couldn't be more pleased with the results. Primo calves have done great things in the ring and in donor pens! This one has all the potential to do the same. You can't build 1/2 bloods any better than this heifer.

**Steinbronn Farms**



Lot 56



Maxi Belle 1U

## 57

### STN Miss Diamonds

1/30/18 • 1/2 Simmental • #3649135

Dameron First Class

Mr TR Hammer 308A ET

Colburn Primo 5153

STN/EBA Twinkles Flash

Silveiras Saras Dream

JSMF Flick of Glitter

CE	BW	WW	YW	Milk	API	TI
11.5	0.4	64.8	98.4	17.7	115.4	68.0

Due 2/20/20 to Thor 503C #:3009490

Here is some true hard core cow power. Again backed by the National Champion Flick of Glitter. She is very sharp fronted and flawless in her design. A very nice female that is ready to be a great cow.

**Steinbronn Farms**



Lot 57

# Angus Bred Heifers



Lot 58



GAR Ashland



Lot 59

**58**

**STF Rita F813**

1/5/18 • Reg. Angus • #19186900

Baldrige Xpand X743

EXAR Upshot 0562B

**Baldrige Colonel C251**

**STF Rita B412**

Baldrige Isabel Y69

Bricton/Ray Rita 8198

CE	BW	WW	YW	Milk	\$W	\$B
3	2.8	62	113	24	59	159

Due 2/21/20 to GAR Ashland #:18217198

A beast of an Angus heifer. They don't make Angus cattle any stouter then this one. She has the potential to be a donor for her new owner, to make many winning 1/2 blood Simmentals or continue to breed her Angus. She is bred up to one of the hottest Angus bulls right now GAR Ashland. Whether you want to play the number game or breed for style this girl will get it done.

**Steinbronn Farms**

**59**

**SCC Blackbird 8076**

2/4/18 • Reg. Angus • #19234465

PA Valor 201

PA Power Tool 9108

**SCC Soldier 6010**

**Raven Blackbird Blackie 2472**

Deer Valley Barbara

Raven Blackbird 576

CE	BW	WW	YW	Milk	\$W	\$B
9	1.3	55	97	25	62	152

Due 2/8/20 to Thor 503C #:3009490

We decided this year to pick out what we thought was our best Angus show heifer and breed her to a Simmental. So here she is and you need to take a look. She is correct in every aspect and has the look to raise bulls,steers or heifers. A very nice package here AI'd up to the Thor bull.

**Steinbronn Farms**

# Angus & Charolais Bred Heifers

## 60

### EBA Miss F30

1/23/18 • Reg. Angus • #Pending

SP The Answer 813

Connealy Consensus

**CARD Answer 76Y**

**Connealy Earnan 076E**

CARD Pride Lady 76W

Brazila of Conanga

CE	BW	WW	YW	Milk	API	TI
-	-	-	-	-	-	-

AI 5/30 to Turning Point. Vet called 85 days PE Bred on 9/19.  
PE 6/5/19 till 9/1/19 to C-Bar-RJ Reckoning Red Angus #1723361

This Answer daughter is moderate framed, big middled, and good necked. F30 is sure to make exciting Angus & SimAngus progeny in the future. She is carrying a heifer by Reckoning

**E&B Arthur Land & Cattle**



Lot 60

## 61

### EBA PZC Ms Starlight F67

3/25/18 • PB Charolais • #F1280888

Elder's Zeus 22Z

TR Smoke on the Water

**Elder's Star Buck 284B**

**PZC Day Lily 5067 ET**

SVY Star Struck 559R

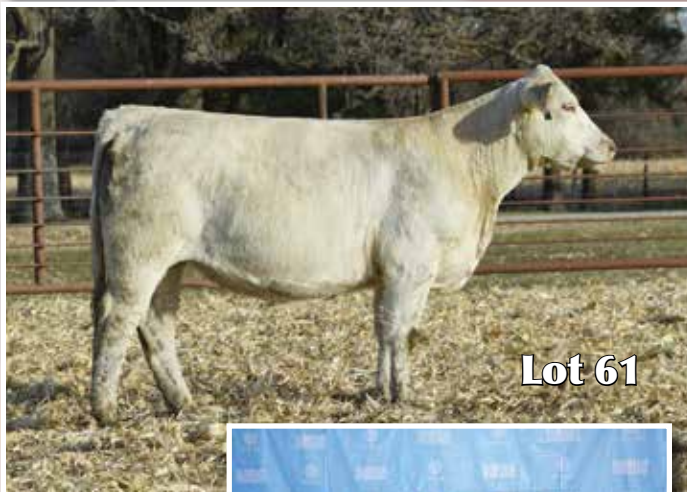
Thomas Ms Impressive 0641

CE	BW	WW	YW	Milk	API	TI
-	-	-	-	-	-	-

AI 5/30 to Double Vision. Vet called safe AI Bred on 9/19.  
PE 6/5/19 till 9/1/19 to C-Bar-RJ Reckoning Red Angus #1723361

F67 is a granddaughter of the great 0641 donor who has laid the foundation for so many operations across the nations. Long bodied, great fronted, and powerful at the ground. She's carrying a heifer by Sharadon Double Vision.

**E&B Arthur Land & Cattle**



Lot 61



Double Vision

## 62

### EBA PZC Ms Stealth F5004

3/21/18 • PB Charolais • #Pending

Elder's Zeus 22Z

DR Stealth 574

**Elder's Star Buck 284B**

**M&M Ms Stealth 9509 PLD ET**

SVY Star Struck 559R

Baldrige Sweetheart

CE	BW	WW	YW	Milk	API	TI
-	-	-	-	-	-	-

AI 5/30 to Fast Track. Vet called safe AI Bred on 9/19.  
PE 6/5/19 till 9/1/19 to C-Bar-RJ Reckoning Red Angus #1723361

Study the pedigree here this one is a direct daughter of the great Stealth 9509 who has created multiple high sellers for Polzin, Jackson, and so many breeders across the nation. This female is moderate in her frame and powerful at the ground. Carrying a bull.

**E&B Arthur Land & Cattle**



Lot 62



M&M Stealth 9509

29

Royal Classic

# Sandvold Dispersal



Lot 63



I-80 Steer by Lot 64

This fall I made the decision to disperse my cow herd. This decision was made due to my increasing demands with my full time career and family. I'm not walking away from the cattle business and plan to get back in as soon as time allows the hobby I love to come back into my life. I've been running a small herd the last few years and have sent many of my calves to traders. These cows have all been raising their own calves over the years. These cattle all milk and have good dispositions. If you have any questions feel free to give me a call I'd love to talk about the cattle being offered here.

Brett Sandvold - 712-269-2326



Lot 64

63

**Sandvold Ms 285**

3/1/12 • AOB • #Unregistered

Simmental

Sachua Maine x Angus

CE	BW	WW	YW	Milk	API	TI
-	-	-	-	-	-	-

AI 5/30 to Fu Man Chu. Safe AI

285 is the one everyone asks about when they come and view my herd. Made just the way I love them. Bigger framed, monster foot, great structured, and just simply massive in every way imaginable. They say you have to walk a fine line to produce those top end steers and this gal is right on that border. I don't think I've ever had a cow who hit me this hard in 30+ years in the business. Bid with confidence on this standout.

**Sandvold Cattle**

64

**Sandvold Ms 213**

3/25/12 • AOB • #Unregistered

BK Ice Pick 472J

Irish Whiskey

VanHove Maine x Angus

NTC 615 Ever Ready

CE	BW	WW	YW	Milk	API	TI
-	-	-	-	-	-	-

AI 6/11 to Fu Man Chu. Safe AI

This has been one of the funnest cows I've ever owned. Regardless of how you breed her you can guarantee a check is waiting at weaning time. To date she has sold a steer to Guyer at \$6000, another went to Bonham at \$3750, and a market heifer at \$2250. That before even talking about how impressive she is in the flesh. 213 is monster footed, great pasterned, milks like no other Irish Whiskey you've ever seen, and is flat dead on the move.

**Sandvold Cattle**

# Sandvold Dispersal



Lot 65



Fu Man Chu



Trump Train



Lot 66

65

**Sandvold Ms 442**

3/20/14 • AOB • #Unregistered

Ali Grizz Son  
Bojo VanHove Maine x Angus  
Heat Seeker -

CE	BW	WW	YW	Milk	API	TI
-	-	-	-	-	-	-

AI 5/8 to Fu Man Chu. Safe AI

When I picked this gal out at VanHove's as a bred heifer I drove up there determined to find the biggest framed, best looking one I could find and this is the one that got my hand in the air. I've been breeding this stout and massive Bojo daughter maternally for years, until a year ago when she laid down and made a Monopoly heifer who went to Colorado for \$2750. I really think this mating to Fu will be pretty special.

**Sandvold Cattle**

66

**Sandvold Ms 211**

3/1/12 • AOB • #Unregistered

BHCS Heat Seeker Irish Whiskey Son  
Heat Wave VanHove Whiskey  
FAWL Ma x Chi -

CE	BW	WW	YW	Milk	API	TI
-	-	-	-	-	-	-

AI 6/1 to Trump Train. Safe AI

It's hard to beat the Heat Wave Whiskey cross, especially when it's combined in females like this. The first calf this standout produced was an I-80 who was named Reserve Champion Market Animal at the Four County Fair in Dunlap, Iowa shown by Ethan Sandvold. This cow stamps them powerful and good looking regardless of the sire. I'm really excited to hear what Trump Train will do here!

**Sandvold Cattle**

# Sandvold Dispersal



Lot 67



No Guts No Glory



Lot 68

67

**Sandvold Ms 504**

3/16/15 • AOB • #Unregistered

Monopoly  
**Fu Man Chu**  
Bounty Hunter

New Level  
**Powell New Level**  
-

CE	BW	WW	YW	Milk	API	TI
-	-	-	-	-	-	-

AI 5/28 to No Guts No Glory. Safe AI

The proof is in the pudding right here! 504 is the dam of the Lot 68 bred heifer as well as a full sister who was born this spring who sold off the pasture to Colorado at \$2100. I bred this one up to Lautner's exciting new sire No Guts No Glory as I think this is going to be just the ticket. No guesswork necessary on this young cow.

**Sandvold Cattle**

68

**Sandvold Ms 8504**

2/15/18 • AOB • #Unregistered

MAB  
**One In The Chamber**  
Goretska 805

Fu Man Chu  
**Sandvold Ms 504**  
Powell New Level

CE	BW	WW	YW	Milk	API	TI
-	-	-	-	-	-	-

Pasture Bred 5/4 to Kubie (Lock n Load x Final Answer)

This One in the Chamber female shows the power of the 504 cow family. I sold the remainder of my bull bred cattle in Dunlap but this one was simply too good to sell at a sale barn. 8504 is moderate in her frame, extra soft legged, and more than stout enough to make high impact steers down the road. She is bred to a calving ease sire to start her off on the right track.

**Sandvold Cattle**

# Sandvold Dispersal



Lot 69



One In The Chamber



Lot 70

69

**Sandvold Ms 497**

3/20/14 • AOB • #Unregistered

Hustler (Simmental)

Carousel 8

Hot Sauce

VanHove R6

Whiskey/Anchor

-

CE	BW	WW	YW	Milk	API	TI
-	-	-	-	-	-	-

AI 5/8 to One in the Chamber. Safe AI

This baldy Hot Sauce female is even better in person than she is in the photo. 497 came from the Van Hove program and is great legged, clean chested, and chisel necked. I sold a steer off the farm out of her last year for \$1900. If you like them moderate and correct in their lines this female needs to make your short list. She sells bred up to One in the Chamber.

**Sandvold Cattle**

70

**V/S Cuba C142**

3/1/15 • 1/2 Simmental • #3049981

K-Ler Make It Rain

-

RBS Raining Diamonds

Y142

RBS You Wish

-

CE	BW	WW	YW	Milk	API	TI
8.7	1.7	55.8	75.5	20.4	98.0	58.5

AI 6/1 to Monopoly 7. Safe AI

This is one of the few papered cattle I've had on the farm over the years and came from the Vogt Simmental herd in western Iowa. This female placed a steer to Bonham a few years back. C142 is moderate framed, sleek necked, and sells bred up to Monopoly 7.

**Sandvold Cattle**

# AOB Open Heifers



MINN Class on Class



**71**

**Miss Greta**

3/7/19 • AOB • #Unregistered

Heat Wave  
**Monopoly** Mr HOC Broker  
Century Touchstone An **Harriet**  
WAG Harrietta  
Open Heifer

This Monopoly X Harriet ET heifer has it all! Miss Greta is very attractive, deep bodied, and loaded with style. She loves attention and will seek you out when you're in her pen. This heifer is extremely docile and is broke to lead! You will definitely fall in love with her personality. Her popular bloodlines (Monopoly, Broker, Harrietta) have produced numerous promotional bulls and very successful show heifers. Mark this heifer down on your watch list.

**Sharff Cattle**

**72**

**Miss Classy**

3/11/19 • Mainetainer • #Pending

Daddy's Money  
**MINN Class on Class** -  
JSC Katie 05S **Maine/Simmental**  
Open Heifer

These Class on Class heifers are rare. They have a combination of power and elegance. Her name describes her well. Miss Classy has that wide, square hip that everyone drools about. She is really long spined with a cool, smooth look through her shoulders and neck. Miss Classy is extremely sound on her legs. She is big boned and big footed. She is ready for the show ring if so desired. Take note of her pedigree. She will produce some great ones.

**Sharff Cattle**

## 73

### Miss Pleaser

4/2/19 • AOB • #Unregistered

Bandwagon

Silveiras Style

**Crowd Pleaser**

**Maine/Sim/Angus**

JSC Katie 05S

Surround Sound

Open Heifer

This heifer's pedigree is a unique combination. She is sired by Crowd Pleaser (Bandwagon X Irish Whiskey X Katie). The dam side is Silveiras Style X Surround Sound (Monopoly X Harrietta). She has an explosive rib cage and a shoulder that fits in really nice. She has a very feminine front and is structurally sound. An added bonus with this girl is she has always been extremely docile.

**Sharff Cattle**



Lot 73

## 74

### Miss Glory

3/5/19 • AOB • #Unregistered

Monopoly

-

**Fu Man Chu**

**Who Made Who/Walks Alone**

Bounty Hunter

-

Open Heifer

Fu Man Chu has really worked well for us. This heifer's full brother was our high selling steer on our sale two years ago and went on to do quite well. She exhibits the same characteristics he did: flexibility, deep thick rib, and an easy grower. This heifer is great boned and is a pleasure to watch on the move.

**Sharff Cattle**



Lot 74

## 75

### Miss Gracie

3/25/19 • AOB • #Unregistered

Walks Alone

-

**Two Tone**

**Maine x Simmental**

Stray Kitty

-

Open Heifer

This Two Tone heifer is another explosive heifer to look at. If you like sow-bellied heifers, this one is for you. Miss Gracie has extreme thickness from front to rear. She is feminine fronted through her shoulders and neck. This girl is destined to produce productive, stylish calves.

**Sharff Cattle**



Lot 75

## 76

### Miss Glam

3/2/19 • AOB • #Unregistered

Mr HOC Broker

**PAL/CLAC Meant to Be**

**Surround Sound/Walks Alone**

KLS Diamond W516

Open Heifer

Miss Glam is a true ground sow following in her grandmother's tradition. She is thick and deep bellied but maintains true femininity with a very attractive front end sleek, long-bodied lines. She would make a great show heifer or breed her for your next show animal. Mark her down. You will be impressed!

**Sharff Cattle**



**Lot 76**

## 77

### Miss Gertie

3/3/19 • AOB • #Unregistered

Heat Wave

Meyer Ranch 734

**Monopoly**

**Miss Meyer**

Century Touchstone An

WAG Harrietta

Open Heifer

Don't let her picture fool you. Combines were waiting for our return to the field and daylight was ending. Her quiet, lackadaisical demeanor didn't help. You need to see this girl with your own eyes. Her dam, Miss Meyer, is a full sister to the well-known Miss USA. We sold her half-sister in this sale last year. She has cow written all over her. Miss Gertie has a long muscle pattern, is long hiped, and long spined! These types of genetics never miss. Her dam, Miss Meyer, averages 20+ eggs per flush!

**Sharff Cattle**



**Lot 77**



**Miss Meyer**

## 78

### Miss Biscuit

3/14/19 • AOB • #Unregistered

Here I Am

Smooth Sailing

**Risk it for the Biscuit**

**Smooth Sailing Donor**

Unstoppable

Meyer 734

Open Heifer

Miss Biscuit is your next front pasture show heifer. Her dam kept producing top show steers so we decided to flush her. Miss Biscuit has been an attention grabber since birth. She has a natural thickness and ease of movement. She's a complete package of style and function topped with a touch of chrome.

**Sharff Cattle**



**Lot 78**

# Fall First Calf Heifer Pairs



Lot #	Cow ASA	Cow %	Cow Sire	Cow Dam	Calf DOB	Calf Sire	Calf Sex
79	3646178	1/2 SM	Vindication	Com. Angus	9/29/19	Dew North	Bull
80	3306841	PB SM	Kappes Big Ticket	HL Ms Lady S89	10/3/19	Mr CCF 20-20	Bull
81	3332444	PB SM	Ruby's Combustible	Ruby's Rhythm Y195	10/19/19	EBA/CF Remorseless	Heifer
82	3646151	PB SM	Vindication	TBSF Upscale B17	10/6/19	Primo	Bull
83	3391836	1/2 SM	No Remorse	WMCC Caroline	10/2/19	Mr CCF 20-20	Heifer
84	3391835	3/4 SM	Vindication	A821 (Broker)	10/18/19	EBA/CF Remorseless	Bull

Here is a unique opportunity to purchase a group of first calf heifer pairs in which all the work is already done for you. Last summer we had a bull go bad on our bred heifers and thus we only had AI bred females, we made the decision to cull the bottom end off of those females and then went back and AI'd the top end for falls. These females are a result of this fall cycle of breeding, we AI bred our bred heifers on one cycle and then turn out bulls so don't hold these females not breeding for spring against them. The cows have great udders on them and are very good natured, the calves at side look the part and are doing great! This is a great opportunity to purchase females ready to roll right into an early breeding program for AI or Recip usage. Bid with confidence as these are high quality pairs. Due to the calves being very young at picture time we elected to take group shots of these pairs.

***F&B Arthur Land & Cattle***

# Terms & Conditions



**Justin Steffens**                      **Cell: 563-380-6761**  
402 S. Vine St.  
West Union IA 52175



**Jeff Leerar**                                      **Manly, IA**  
**Pioneer Sales Rep.**                      **Cell: 641-430-0651**  
jeffrey.leerar@plantpioneer.com

## **Terms of Sale:**

Terms of payment are cash, good check, or Visa/Master Card. All credit card payments will incur a 3% processing fee which will be applied to your total purchase price. Thus a \$1000 purchase will be charged \$1030. No cattle will be loaded until approved by sale clerks.

## **Terms & Conditions:**

All cattle sell under the terms and conditions of their respective breed associations. All announcements made on the supplement sheet or on the sale block will take precedence over material presented in this book. EPD's are based off current Bolt data as the catalog was prepared. Please leave all transfer instructions with the sale clerks following the auction.

## **Trucking:**

We will work with you to find the most reasonable and economical trucking available. Cattle must leave the sale site by Sunday so please let us know as soon as possible following the sale what your needs may be.

**Trucking available through Courtney Lovett: 402-984-3133.**

## **Heard Health:**

All cattle will have papers for interstate travel, and all bred females will be recently pregnancy checked. Buyers of bred cattle have 21 days to re-pregnancy check purchases. If any animals are found to be open please contact the seller or sale management within that 21 day period for an adjustment to be made.

## **Absentee Bidding:**

If you will not be able to attend the sale please contact Sale Management for a member of the sale staff to obtain a bidder number in order to bid over the phone.

## **Liabilities:**

Everyone attending this auction does so at their own risk. Sale Management, Staff, Consignors, & the Hansen Center assumes no risk for any injury or loss which occurs at the sale site.

## **Embryo Lots:**

Shipping cost associated with moving embryos to the new buyer will be the responsibility of the buyer. We will assist in any way possible to reduce these costs as much as possible.

## **Ultra Sound Sexing:**

We cannot guarantee 100% that the results given to us regarding sex during ultra-sound will result in what is listed. We can however state that over the years we have had very few sex's missed by our embryologist and feel comfortable passing his word on to you.

## **Sexed Semen:**

We cannot 100% guarantee sex on cattle bred with sexed semen.

## **Insurance:**

Insurance will be available at the clerk's desk. James F. Bessler Inc. Mortality Insurance. Jim Bessler 815-762-2641.

Dwyer Cattle  
740 26th Street  
Roseville IL 61473



*3<sup>rd</sup> Annual*  
***Royal Classic***



January 4, 2020 at 5:00 pm  
Hansen Learning Center  
Ames, IA

*Lifestyle, Livelihood, Legacy*